

IHR NEUES ZUHAUSE

dahlienstrasse

GERLAFINGEN

Haus 1

5.5-ZI.-REH.

Nutzfläche: 183.5 m²

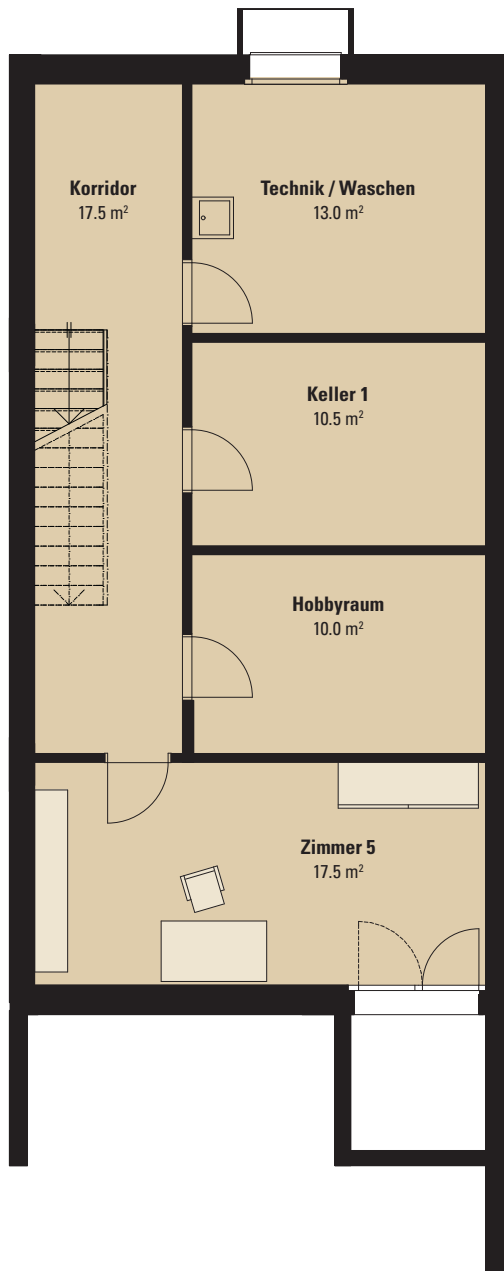
Sitzplatz: 12.0 m²

Terrasse: 28.5 m²

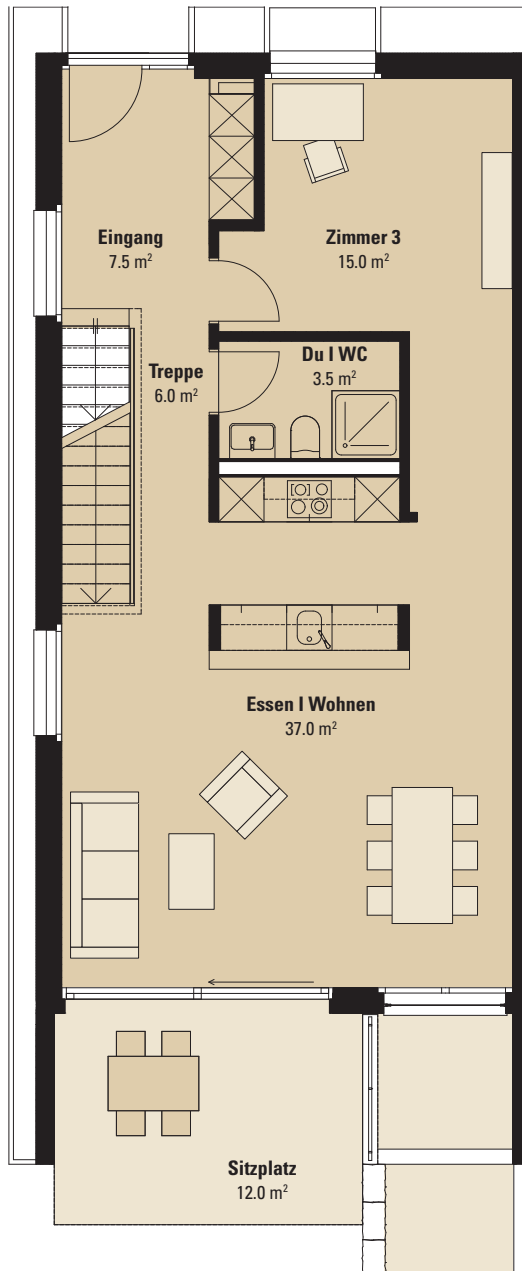


1:100

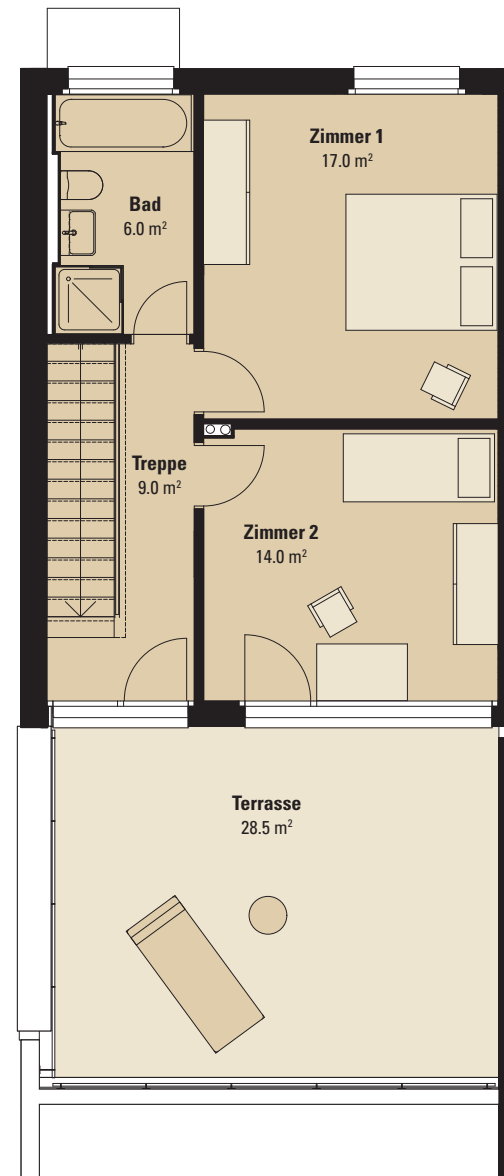
0 1 3m



Untergeschoss



Erdgeschoss



Obergeschoss