

IHR NEUES ZUHAUSE

dahlienstrasse

GERLAFINGEN

Haus 4

5.5-ZI.-REH.

Nutzfläche: 183.5 m²

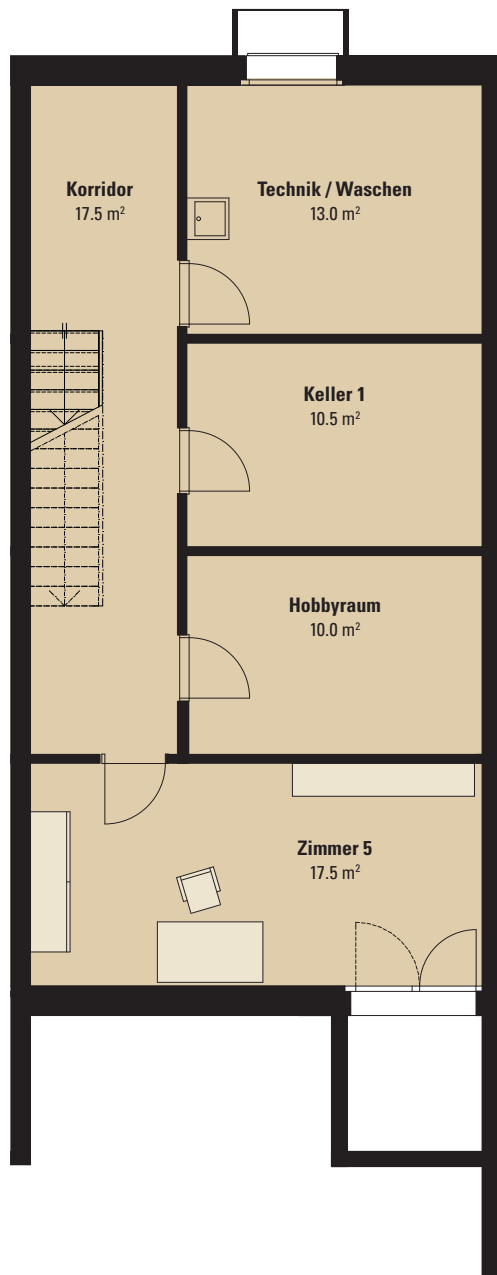
Sitzplatz: 11.5 m²

Terrasse: 29.0 m²

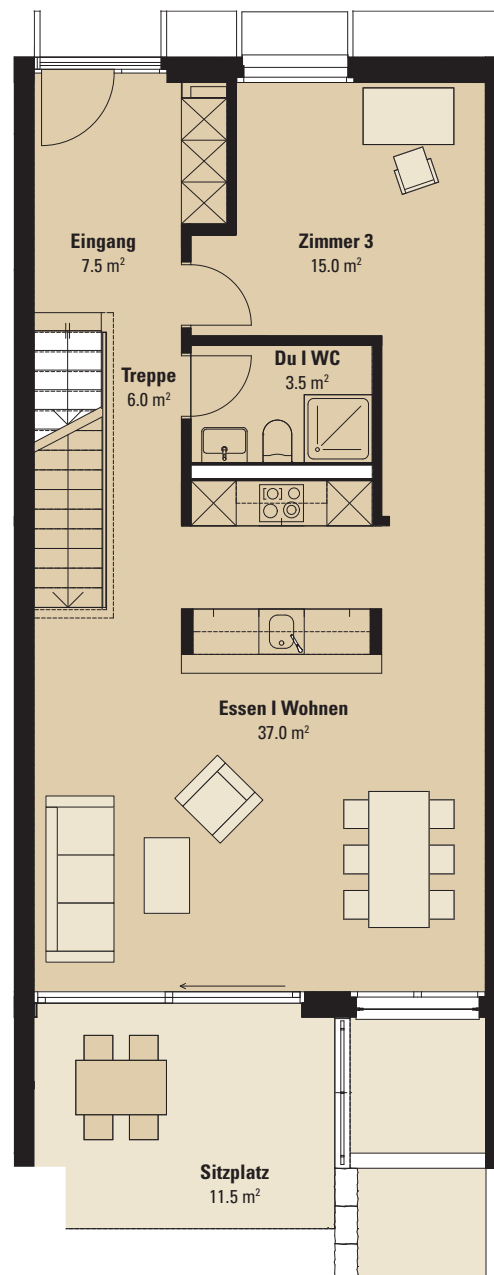


1:100

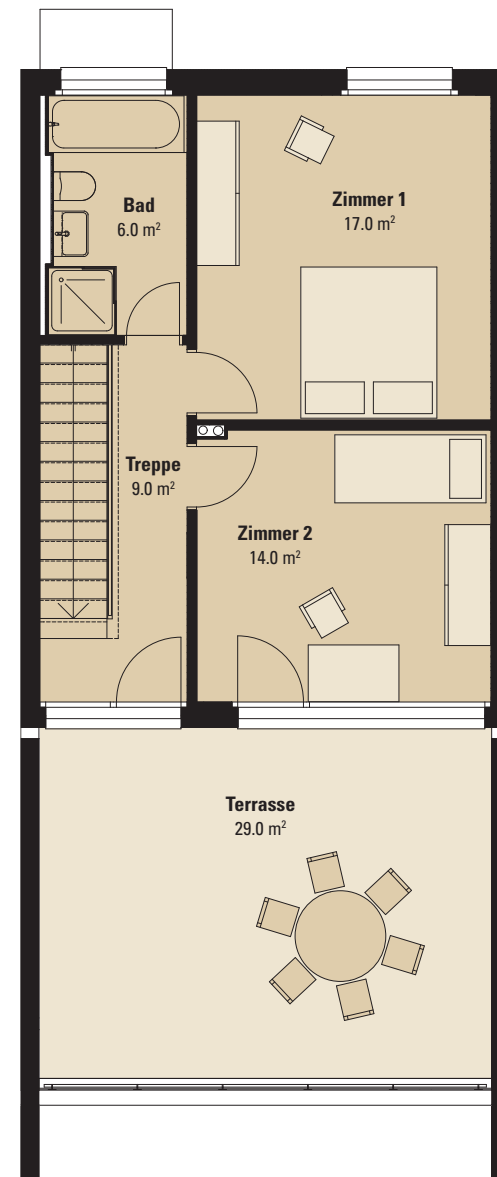
0 1 3m



Untergeschoss



Erdgeschoss



Obergeschoss